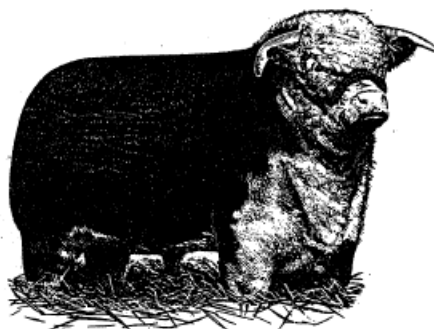


## ***A REPEAT OF OPPORTUNITY!***



# **BEEF'S**

550 S. Main  
Kendallville, Indiana 46755  
Phone: 219-347-9965

**ANNOUNCES.....**

### **SERIES OF FIVE OPEN DOUBLES**

**\$2,000 ADDED**

First four teams to place highest of series of five matches, try for % of added \$2,000 to entry -- compliments of Playfair, Inc. and Dale Gushman. Jackets from Poor Beef for 1st place finishers of five series.

**Series of Five Dates:**

- October 15, 1994
- November 21, 1994
- January 21, 1995
- February 18, 1995
- March 25, 1995

**Payback:**

- 1st - 50% - 4 Points
- 2nd - 30% - 3 Points
- 3rd - 15% - 2 Points
- 4th - 5% - 1 Point

Entry: \$40 per team - Sale at 11 a.m. - Two Boards (over 16 teams, mark 4, play to 15 until money games).

**RECOMMENDED LODGING:** Economy Inn, 219-347-3500, or Days Inn, 219-347-5263

**JOIN US FOR NEW YEAR'S EVE, DEC. 31, 1994, Open Doubles -- Double Elimination**  
\$40 Entry Fee -- Sale at 11 a.m. **AND AN OPEN SINGLES, APRIL 29, 1995**  
\$50 entry, sale at 11 a.m.